

Summary of U.S. Bureau of Land Management Land Health Standards Status Associated with Wild Horses (1997-2023)

<i>Breakdown of Land Health Standards Status on Public Land Livestock Allotments</i>	
Description	Public Land (acres)
Total allotments meeting land health standards	57,820,276
Total allotments failing land health standards	56,751,898
Failing due to livestock	37,885,522
Failing due to causes other than livestock	11,899,530
Failing due to livestock in conjunction with wild horses	6,474,804
Failing solely due to wild horses (no reference to livestock)	951,812
Failing due to causes other than livestock or wild horses	4,221,134
Failing but cause not identified	6,966,846
Determination not complete	36,580,713
Other (blank, incomplete data)	1,200,667
Total public land allotments acreage	152,353,554

<i>“Horses” and “Horses and Livestock” Attributed as the Causal Factor for a Failing Assessment-- out of 20,983 livestock allotments or 152,353,554 acres</i>				
Failing Reason	Allotments (#)	Allotments (%)	Public Lands (acres)	Public Lands (%)
Not Met due to Livestock and Horses	60	0.29%	6,474,804	4.25%
Not Met due solely to Horses	17	0.08%	951,812	0.62%
TOTAL	77	0.37%	7,426,616	4.87%

Summary of U.S. Bureau of Land Management Land Health Standards Status Associated with Wild Horses by State (1997-2023)

Wild Horses as a Cause for Land Health Standard Failure by State

BLM identifies wild horses as a cause of failure to achieve land health standards in 77 allotments containing roughly 7.4 million acres of public lands. The majority of lands which fail standards and identify wild horses and burros as a cause are in Nevada.

State	Acres identified as failing due to “horses” or “horses and livestock”	Public Lands (% of total)
Arizona	0	0%
California	535,068	0.35%
Colorado	96,096	0.06%
Idaho	30,374	0.02%
Montana	38,313	0.03%
New Mexico	14,623	0.01%
Nevada	6,165,927	4.05%
Oregon	81,499	0.05%
Utah	37,1905	0.24%
Wyoming	92,811	0.06%
TOTAL	7,426,616	4.87%

Causes of Land Health Standard Failure

Figure 1: When BLM identifies an allotment as failing to meet land health standards, in most cases livestock is a cause. The analysis looked at all the data that BLM provided, including those allotments in wild horse Herd Management Areas. (1997-2023)

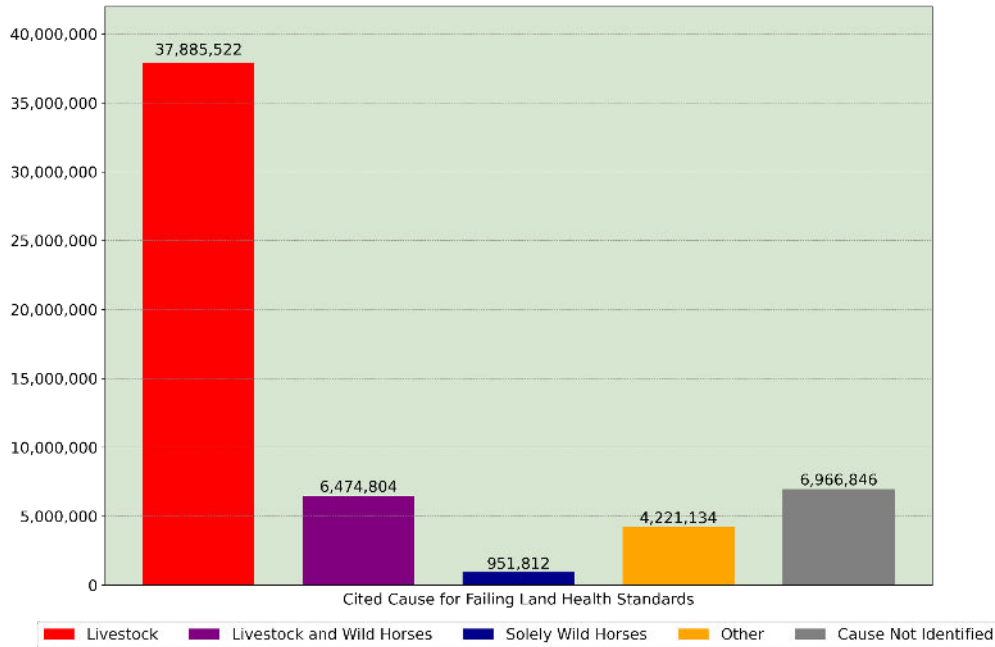


Figure 2: In the last four years, there has been a slight decrease (1,598,8242 acres) in the acreage of the allotments in which BLM attributes land health standards failure to livestock. We see a slight increase in acreage failure attributed solely to wild horses (152,756 acres). We see a large increase in acreage in which the cause of failure is not identified or attributed to another cause (3,810,655 acres). “Other” causes could include invasive species, fire, or drought. (1997-2020)

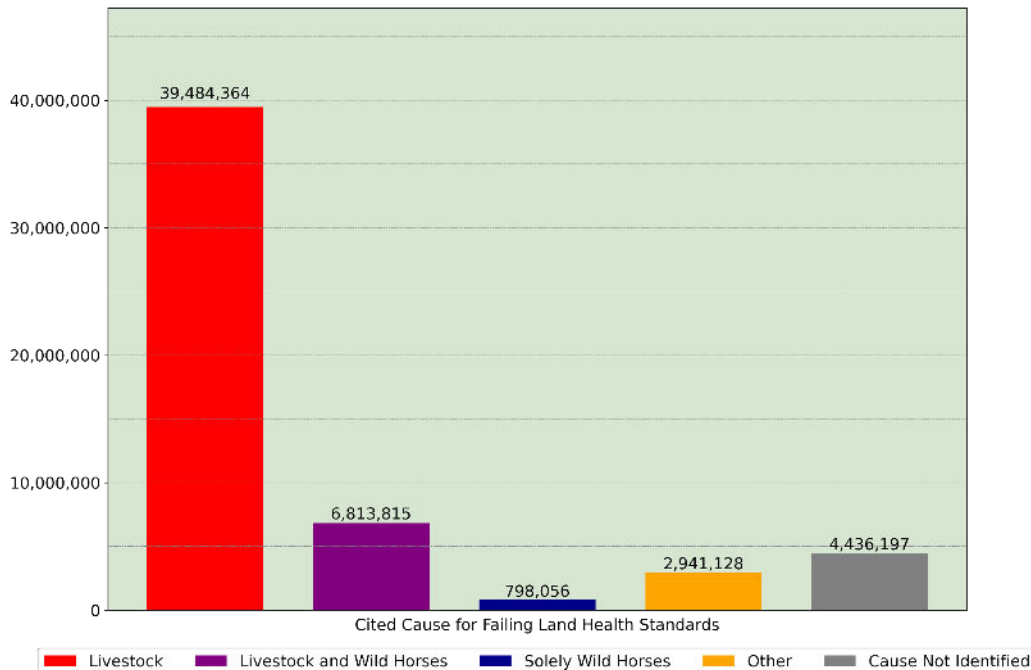
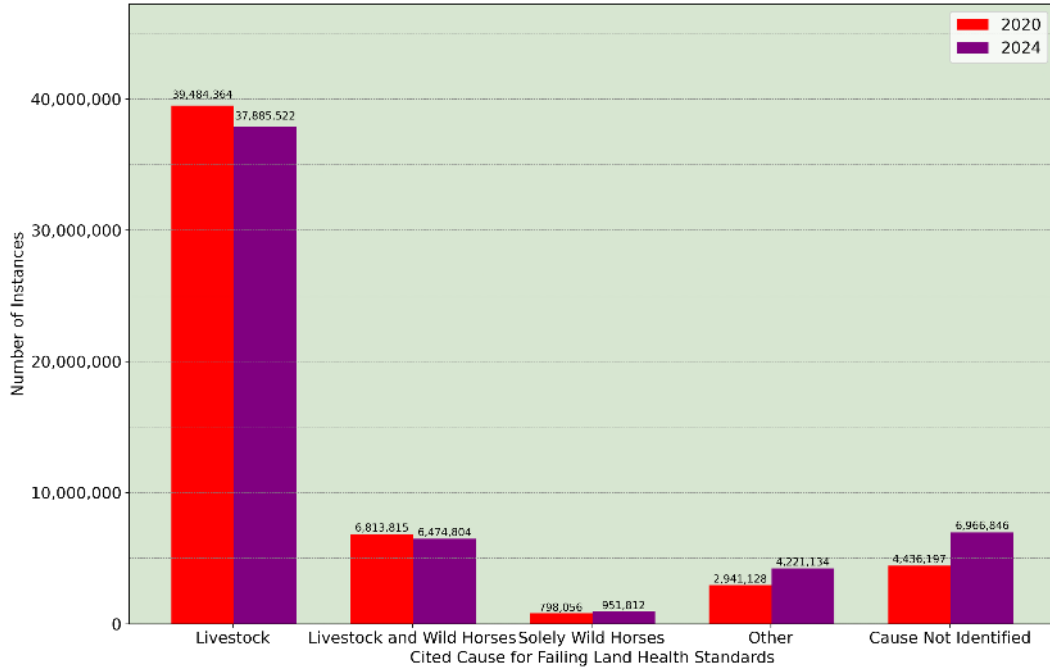
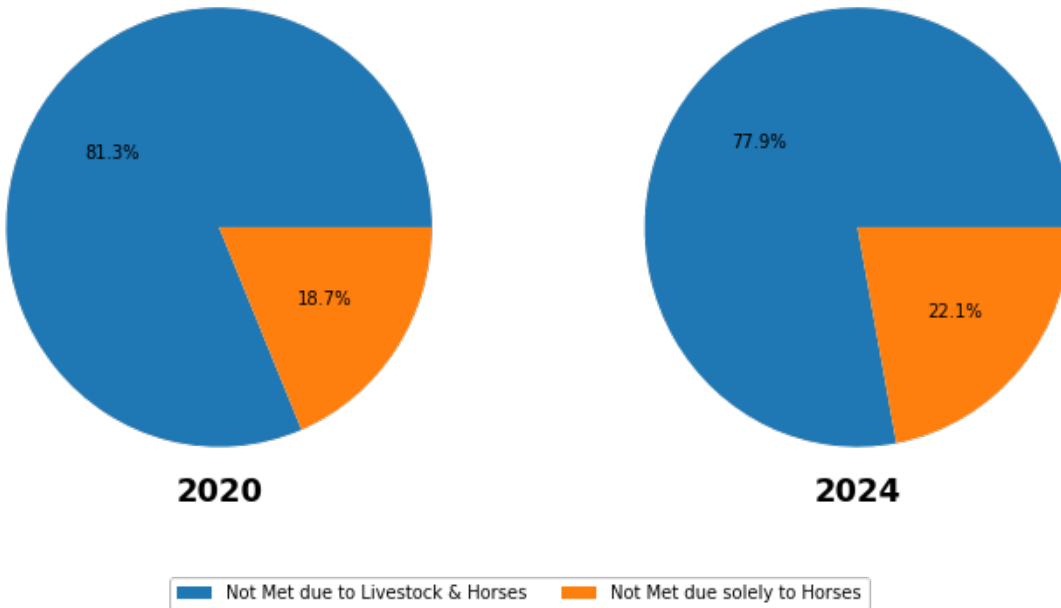


Figure 3: When comparing the data for 2020 and 2024, there is a contrast in the frequency of cited causes of failing land health standards. BLM identifies livestock as the predominant cause of failing land health standards. (1997-2023)



Distribution of Allotment Land Health Failure Causation

Figure 4: Distribution of Horses and Livestock as the sole causal factors for failing allotments, a total of 77 allotments in 2024 and 75 in 2020 (by records).



Distribution of Acreage Land Health Failure Causation

Figure 5: Distribution of Horses and Livestock as the sole causal factors for failing acreage allotments, a total of 7,426,616 acres in 2023 and 7,611,871 acres in 2020 (by acres)

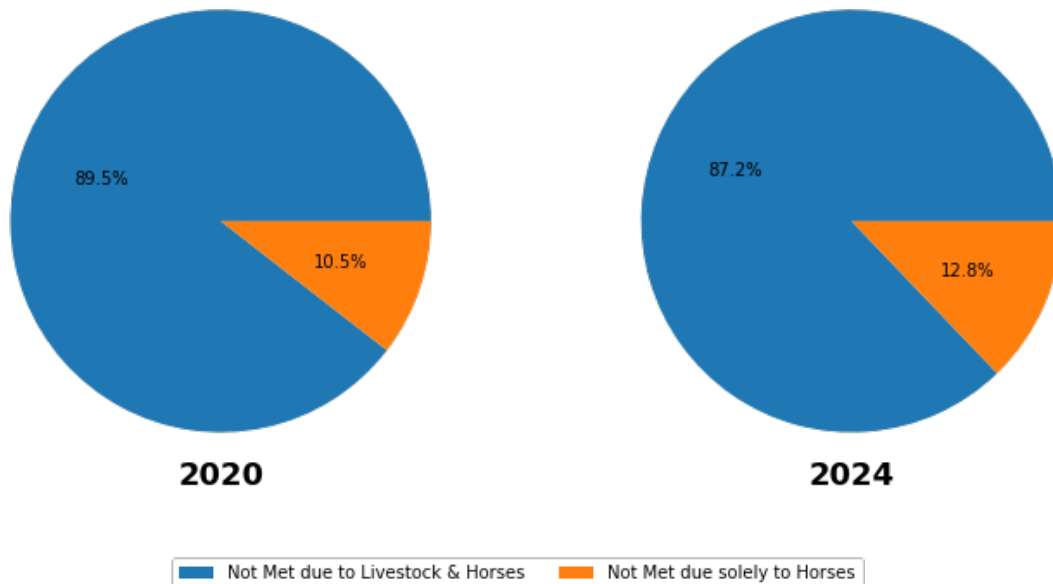
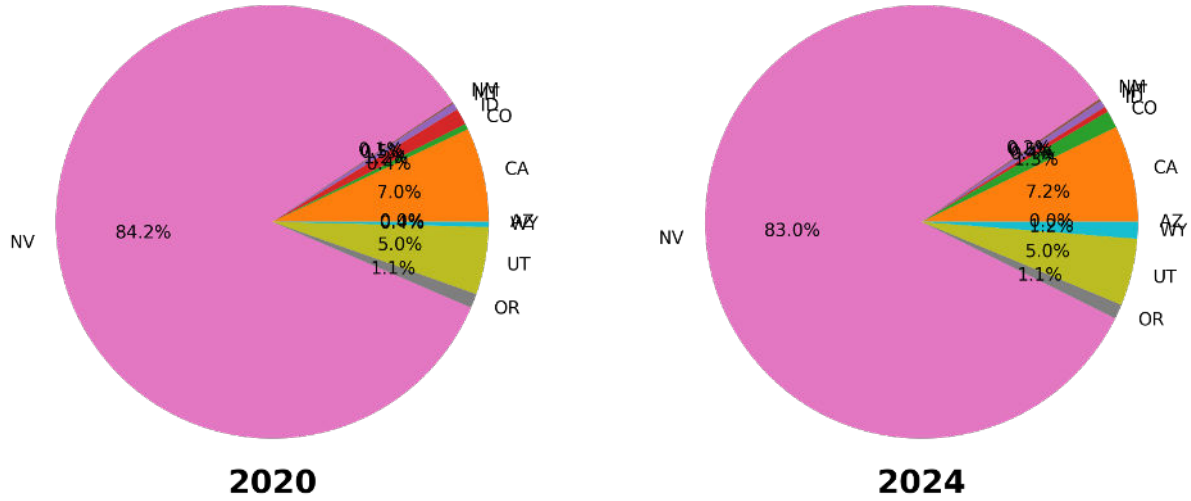


Figure 6: Distribution of Acres Identified as Failing Due to Horses or Livestock in 2020 and 2024 by state, a total of 7,426,616 acres in 2023 and 7,611,871 acres in 2020.



Relative Significance of Horses and Livestock as Causes of Failure to Achieve Allotment Land Health

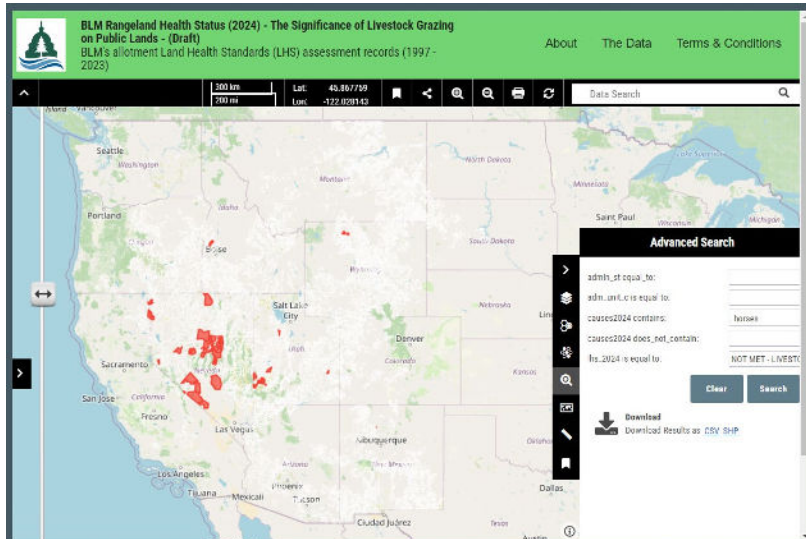


Figure 7a. Allotments that failed land health standards where BLM identified horses & livestock as the cause.

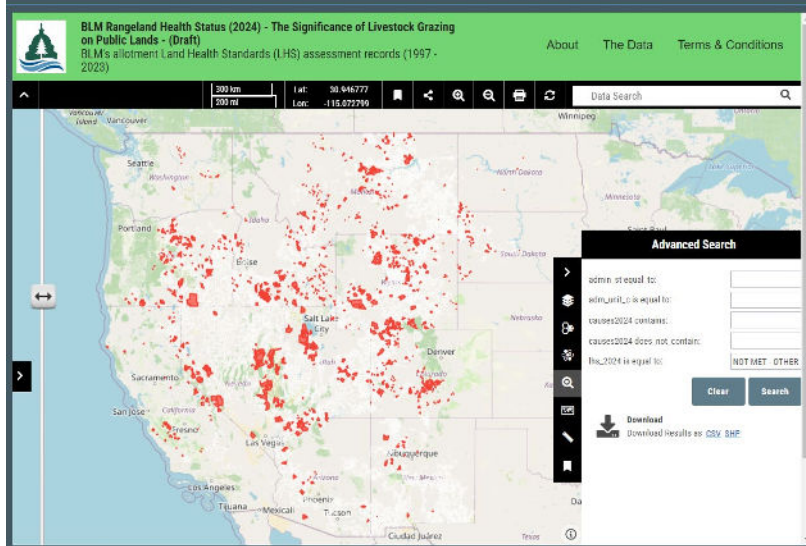


Figure 7b. Allotments that failed land health standards where BLM did not identify livestock as the cause. (OTHER, e.g., off-road vehicles, oil and gas, invasive species, horses)

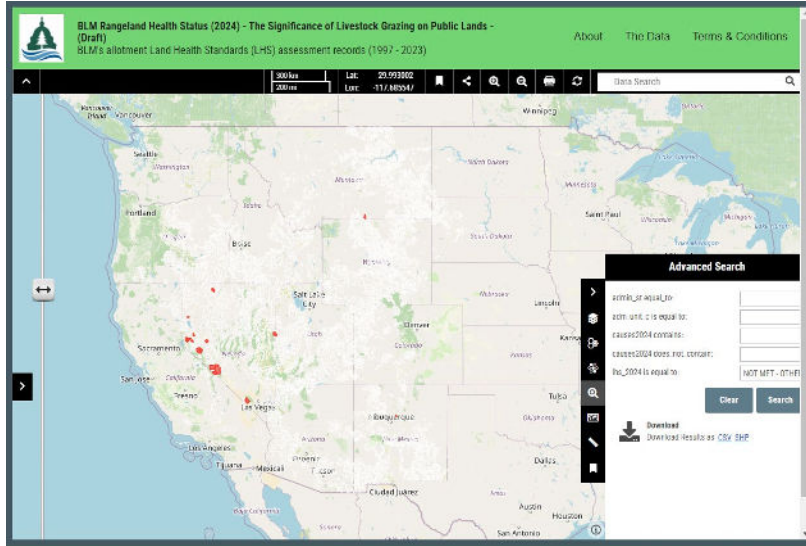


Figure 7c. Allotments that failed land health standards where BLM identified horses as a cause but not livestock.