



Florida Department of State Division of Elections

Contributions Query Results

This information is being provided as a convenience to the public, has been processed by the Division of Elections and should be cross referenced with the original report on file with the Division of Elections in case of questions.
About the Campaign Finance Data Base

Search Criteria:

Detail of Candidates
Election Year: 2002 General Election
Office: Governor
Party: Republican Party of Florida
With Candidate Last Name Starts With: bush
And Candidate First Name Starts With: jeb
With Payee Last Name Starts With: Big Wheel
Sort Contributions By: Contributor Name
And Then Sort By: Candidate/Committee Name
Limit Number Of Records Returned To: 10000

Candidate/Committee	Date	Amount	Typ	Contributor Name
Bush, Jeb (REP) (GOV)	09/26/2002	500.00	CHE	BIG WHEEL RECYCLING,
Total:		500.00		

1 Contribution(s) Selected

Query the Campaign Finance Data Base

[Department of State] [Division of Elections] [Campaign Finance - Contributions]



Florida Department of State Division of Elections

Contributions Query Results

This information is being provided as a convenience to the public; has been processed by the Division of Elections and should be cross checked with the original report on file with the Division of Elections in case of questions.

Search Criteria:

Detail of Candidates
Election Year: 2004 General Election
Office: All
Party: All
With Payee Last Name Starts With: ztac
Sort Contributions By: Contributor Name
And Then Sort By: Candidate/Committee Name
Limit Number Of Records Returned To: 10000
Candidate/Committee

Contributor(s) Selected	Date	Amount	Typ	Contributor Name
Coley, David A. (REP) (STR)	03/31/2004	500.00	CRS	ACTREC ENVIRONMENTAL
Total:		\$00.00		

Query the Campaign Finance Data Base
Department of State | Division of Elections | Campaign Finance - Contributions



**Florida Department of State
Division of Elections**

Contributions Query Results

This information is being provided as a convenience to the public, has been processed by the Division of Elections and should be cross referenced with the original report on file with the Division of Elections in case of questions.

About the Campaign Finance Data Base.

Search Criteria:

Detail of Candidates
Election Year: 2002 General Election
Office: Governor
Party: Republican Party of Florida
With Candidate Last Name Starts With: bush
And Candidate First Name Starts With: jeb
With Payee Last Name Starts With: livingston
Sort Contributions By: Contributor Name
And Then Sort By: Candidate/Committee Name
Limit Number Of Records Returned To: 10000

Candidate/Committee	Date	Amount	Typ	C
Bush, Jeb (REP) (GOV)	08/23/2002	50.00	CHE	L
Bush, Jeb (REP) (GOV)	06/14/2002	500.00	CHE	L
Bush, Jeb (REP) (GOV)	09/26/2002	500.00	CHE	L
Bush, Jeb (REP) (GOV)	09/26/2002	500.00	CHE	L
Bush, Jeb (REP) (GOV)	09/10/2002	346.99	INK	L
Bush, Jeb (REP) (GOV)	08/23/2002	25.00	CHE	L
Bush, Jeb (REP) (GOV)	09/10/2002	346.99	INK	L
Bush, Jeb (REP) (GOV)	09/26/2002	500.00	CHE	L
Bush, Jeb (REP) (GOV)	12/31/2001	500.00	CHE	L
Bush, Jeb (REP) (GOV)	10/25/2002	100.00	CHE	L

Total: 3,368.98

10 Contribution(s) Selected

Query the Campaign Finance Data Base

[Department of State] [Division of Elections] [Campaign Finance - Contributions]



**Florida Department of State
Division of Elections**

Contributions Query Results

This information is being provided as a convenience to the public, has been processed by the Division of Elections and should be cross referenced with the original report on file with the Division of Elections in case of questions.
 About the Campaign Finance Data Base.

Search Criteria:

Detail of Candidates
 Election Year: 2002 General Election
 Office: Governor
 Party: Republican Party of Florida
 With Candidate Last Name Starts With: bush
 And Candidate First Name Starts With: job
 With Payee Last Name Starts With: Aztec
 Sort Contributions By: Contributor Name
 And Then Sort By: Candidate/Committee Name
 Limit Number Of Records Returned To: 10000

Candidate/Committee	Date	Amount	Typ	Contributor Name
Bush, Jeb (REP) (GOV)	09/26/2002	500.00	CHE	AZTEC ENVIRONMENTAL
Bush, Jeb (REP) (GOV)	09/10/2002	346.99	INX	AZTEC ENVIRONMENTAL
Bush, Jeb (REP) (GOV)	09/26/2002	500.00	CHE	AZTEC RECYCLERS, INC
Total:		1,346.99		

Query the Campaign Finance Data Base

[Department of State] [Division of Elections] [Campaign Finance - Contributions]



**Florida Department of State
Division of Elections**

Contributions Query Results

This information is being provided as a convenience to the public, has been processed by the Division of Elections and should be cross referenced with the original report on file with the Division of Elections in case of questions.
About the Campaign Finance Data Base.

Search Criteria:

Detail of Candidates
 Election Year: 2002 General Election
 Office: Governor
 Party: Republican Party of Florida
 With Candidate Last Name Starts With: bush
 And Candidate First Name Starts With: jeb
 With Payee Last Name Starts With: livingston
Sort Contributions By: Contributor Name
And Then Sort By: Candidate/Committee Name
 Limit Number Of Records Returned To: 10000

Candidate/Committee	Date	Amount	Typ	Contributor Name
Bush, Jeb (REP) (GOV)	08/23/2002	50.00	CHE	LIVINGSTON BARBARA
Bush, Jeb (REP) (GOV)	06/14/2002	500.00	CHE	LIVINGSTON BOB LIV
Bush, Jeb (REP) (GOV)	09/26/2002	500.00	CHE	LIVINGSTON DEBBIE F.
Bush, Jeb (REP) (GOV)	09/26/2002	500.00	CHE	LIVINGSTON DEBBIE F.
Bush, Jeb (REP) (GOV)	09/10/2002	346.99	INX	LIVINGSTON DEBBIE LIV
Bush, Jeb (REP) (GOV)	08/23/2002	25.00	CHE	LIVINGSTON DIANE
Bush, Jeb (REP) (GOV)	09/10/2002	346.99	INX	LIVINGSTON JIMMY LIV
Bush, Jeb (REP) (GOV)	09/26/2002	500.00	CHE	LIVINGSTON JIMMY LIV
Bush, Jeb (REP) (GOV)	12/31/2001	500.00	CHE	LIVINGSTON MARIE
Bush, Jeb (REP) (GOV)	10/25/2002	100.00	CHE	LIVINGSTON W.
Total:				3,368.98

10 Contribution(s) Selected

Query the Campaign Finance Data Base

<http://election.dos.state.fl.us/cgi-bin/contrib.exe>



**Florida Department of State
Division of Elections**

Contributions Query Results

*This information is being provided as a convenience to the public; has been processed by the Division of Elections and should be cross referenced with the original report on file with the Division of Elections in case of questions.
About the Campaign Finance Data Base.*

Search Criteria:

Detail of Candidates
 Election Year: 2002 General Election
 Office: All
 Party: All
 With Payee Last Name Starts With: mcelheney
 Sort Contributions By: Contributor Name
 And Then Sort By: Candidate/Committee Name
 Limit Number Of Records Returned To: 10000

Candidate/Committee	Date	Amount	Typ	Contributor Name
Bakley, Dennis K. (REP) (STR)	08/23/2002	500.00	CHE	MCEIHENEY RANDALL
Kilmer, Bev (REP) (STR)	05/16/2002	500.00	CHE	MCEIHENEY RANDALL
Robaina, Julio (REP) (STR)	08/23/2002	500.00	CHE	MCEIHENEY RANDALL
Bronson, Charles H. (REP) (AGR)	09/11/2001	500.00	CHE	MCEIHENEY RANDALL A.
Byrd Jr., Johnnie B. (REP) (STR)	06/10/2002	500.00	CHE	MCEIHENEY RANDALL A.
Clary, Charlie (REP) (STS)	07/31/2002	500.00	CHE	MCEIHENEY RANDALL A.
Crist, Charlie (REP) (ATG)	04/21/2001	500.00	CHE	MCEIHENEY RANDALL A.
Gallagher, Tom (REP) (CFO)	05/24/2001	500.00	CHE	MCEIHENEY RANDALL A.
Rodriguez, Jose Luis (REP) (STR)	08/22/2002	500.00	CHE	MCEIHENEY RANDALL A.
Bush, Jeb (REP) (GOV)	09/26/2002	500.00	CHE	MCEIHENEY RANDALL MCE
Bush, Jeb (REP) (GOV)	07/12/2001	500.00	CHE	MCEIHENEY RANDALL MCE

Total: 5,500.00

11 Contribution(s) Selected

Query the Campaign Finance Data Base

<http://election.dos.state.fl.us/cgi-bin/contrib.exe>

7/7/04



Florida Department of State
Division of Elections

Contributions Query Results

This information is being provided as a convenience to the public, has been processed by the Division of Elections and should be cross referenced with the original report on file with the Division of Elections in case of questions.
About the Campaign Finance Data Base.

Search Criteria:

Detail of Candidates
Election Year: 2002 General Election
Office: All
Party: All
With Payee Last Name Starts With: Harrison
Sort Contributions By: Contributor Name
And Then Sort By: Candidate/Committee Name
Limit Number Of Records Returned To: 10000

Candidate/Committee	Date	Amount	Typ	Contributor Name
Carey, Kevin (NOP) (CTU)	10/27/2001	100.00	CHE	HARRISON WILLIAM
Kilmer, Bev (REP) (STR)	05/16/2002	500.00	CHE	HARRISON WILLIAM
Kilmer, Bev (REP) (STR)	10/25/2002	500.00	CHE	HARRISON WILLIAM
Kilmer, Bev (REP) (STR)	10/25/2002	500.00	CHE	HARRISON WILLIAM
Legg, John (REP) (STR)	08/28/2002	500.00	CHE	HARRISON WILLIAM
Llorente, Marcelo (REP) (STR)	09/05/2002	500.00	CHE	HARRISON WILLIAM
Lopez-Cantera, Carlos (REP) (STR)	09/04/2002	500.00	CHE	HARRISON WILLIAM
Lynn, Evelyn (REP) (STS)	06/28/2001	100.00	CHE	HARRISON WILLIAM
Lynn, Evelyn (REP) (STS)	09/10/2002	100.00	CHE	HARRISON WILLIAM
McBride, Bill (DEM) (GOV)	06/24/2002	20.02	CAS	HARRISON WILLIAM
Robatna, Julio (REP) (STR)	08/23/2002	500.00	CHE	HARRISON WILLIAM
Spar, Andrew (DEM) (STR)	05/10/2002	5.00	CAS	HARRISON WILLIAM
Quinones, John 'O' (REP) (STR)	09/03/2002	500.00	CHE	HARRISON WILLIAM G JR.
Stargel, John (REP) (STR)	09/04/2002	500.00	CHE	HARRISON WILLIAM G.
Carlton, Lisa (REP) (STS)	10/09/2001	50.00	CHE	HARRISON WILLIAM T.
Crist, Charlie (REP) (ANG)	10/30/2002	50.00	CHE	HARRISON WILLIAM T.
Detert, Nancy C. (REP) (STR)	10/24/2002	50.00	CHE	HARRISON WILLIAM T.

Kilmer, Bev (REP) (STR)	05/16/2002	500.00	CHE HARRISON WILLIAM, C
Bush, Jeb (REP) (GOV)	08/20/2001	500.00	CHE HARRISON III WILLI
Bronson, Charles H. (REP) (AGR)	09/11/2001	500.00	CHE HARRISON JR. WILLI
Bush, Jeb (REP) (GOV)	09/26/2002	500.00	CHE HARRISON JR. WILLI
Bush, Jeb (REP) (GOV)	07/12/2001	500.00	CHE HARRISON JR. WILLI
Bush, Jeb (REP) (GOV)	10/07/2002	-500.00	CHE HARRISON JR. WILLI
Bush, Jeb (REP) (GOV)	10/10/2002	500.00	CHE HARRISON JR. WILLI
Byrd Jr., Johnnie B. (REP) (STR)	06/10/2002	500.00	CHE HARRISON JR. WILLI
Clary, Charlie (REP) (STS)	07/12/2002	500.00	CHE HARRISON JR. WILLI
Crist, Charlie (REP) (ATG)	04/21/2001	500.00	CHE HARRISON JR. WILLI
Dean, Charles S. (REP) (STR)	09/04/2002	500.00	CHE HARRISON JR. WILLI
Gallagher, Tom (REP) (CFO)	05/24/2001	500.00	CHE HARRISON JR. WILLI
Lorenzo, Marcos F. (REP) (STR)	08/20/2002	500.00	CHE HARRISON JR. WILLI
Rodriguez, Jose Luis (REP) (STR)	08/22/2002	500.00	CHE HARRISON JR. WILLI

Total: 10,975.02

31 Contribution(s) Selected

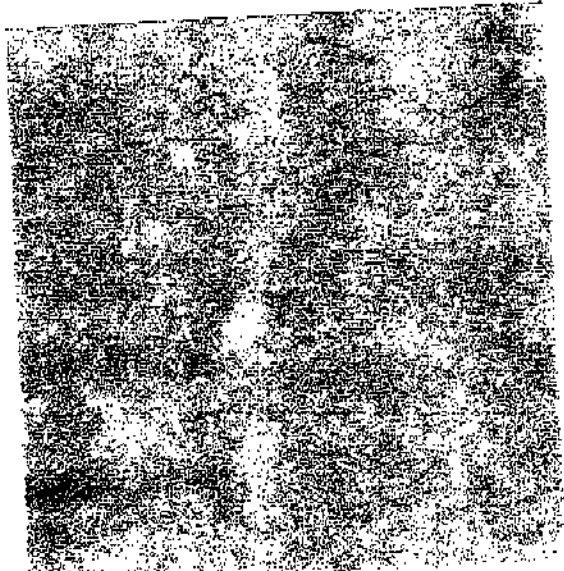
Query the Campaign Finance Data Base

Department of State | Division of Elections | Campaign Finance - Contributions |

Expenditures Query Results - Division of Elections - Florida Department of State

Candidate	Party	Effective Date	Amount	Vendor
Bush, Jeb	(REP) (GOV)	03/26/2002	319.00	AZTEC ENVIRONMENTAL INC.
Bush, Jeb	(REP) (GOV)	05/09/2002	389.00	AZTEC ENVIRONMENTAL INC.
Bush, Jeb	(REP) (GOV)	07/17/2002	224.00	AZTEC ENVIRONMENTAL INC.
Bush, Jeb	(REP) (GOV)	10/31/2002	578.50	AZTEC ENVIRONMENTAL

Total: 1,509.50





**Florida Department of State
Division of Elections**

Contributions Query Results

This information is being provided as a convenience to the public, has been processed by the Division of Elections and should be cross referenced with the original report on file with the Division of Elections in case of questions.

[About the Campaign Finance Data Base.](#)

Search Criteria:

Detail of Candidates
 Election Year: 2002 General Election
 Office: All
 Party: All
 With Payee Last Name Starts With: Big Wheel
 Sort Contributions By: Contributor Name
 And Then Sort By: Candidate/Committee Name
 Limit Number Of Records Returned To: 10000

Candidates/Committee	Date	Amount	Typ	Contributor Name
Clary, Charlie (REP) (STS)	07/09/2002	500.00	CHE	BIG WHEEL RECYCLING INC.
Bush, Jeb (REP) (GOV)	09/26/2002	500.00	CHE	BIG WHEEL RECYCLING,
Total:				1,000.00

Query the Campaign Finance Data Base

[Department of State] [Division of Elections] [Campaign Finance - Contributions]