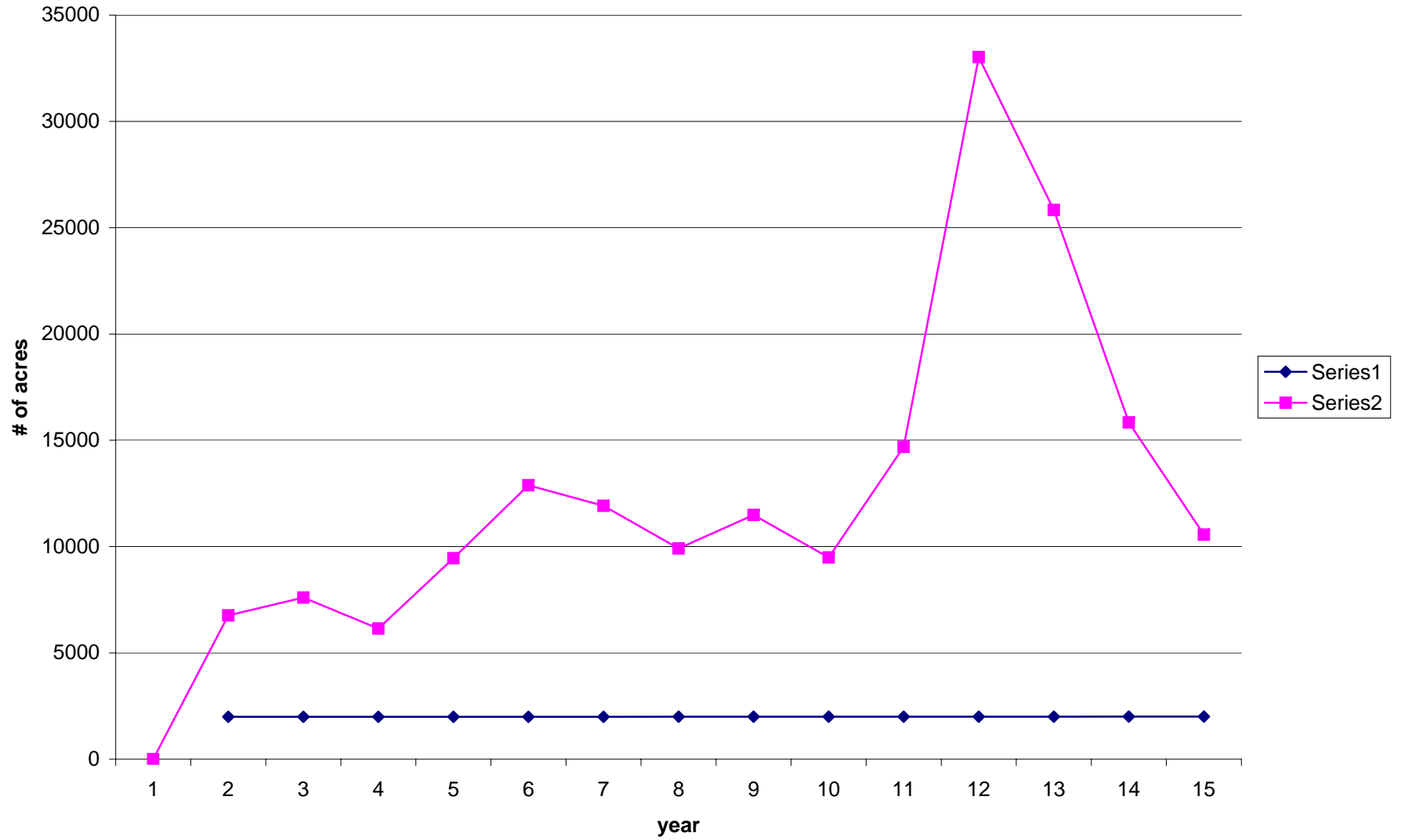
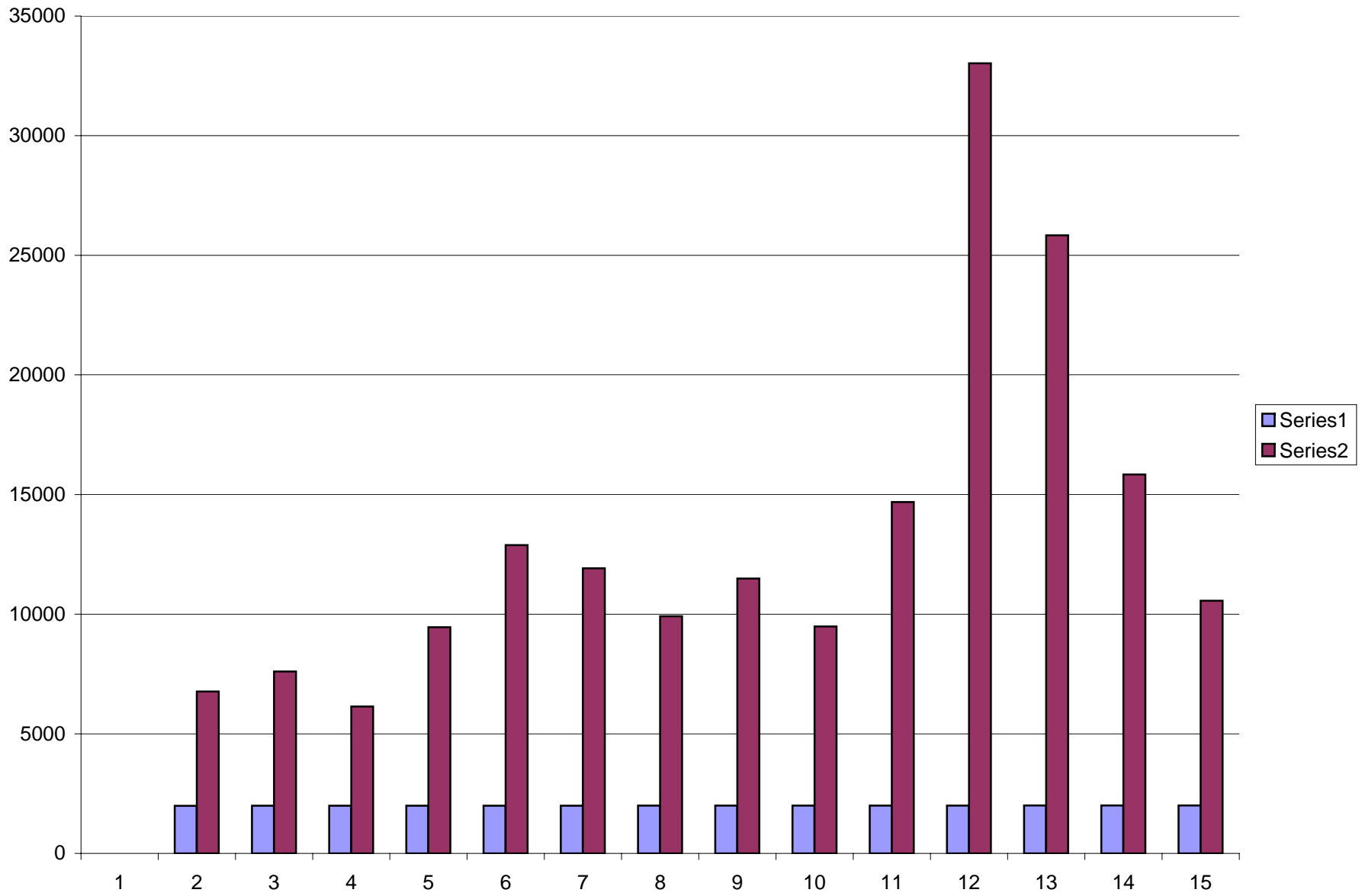
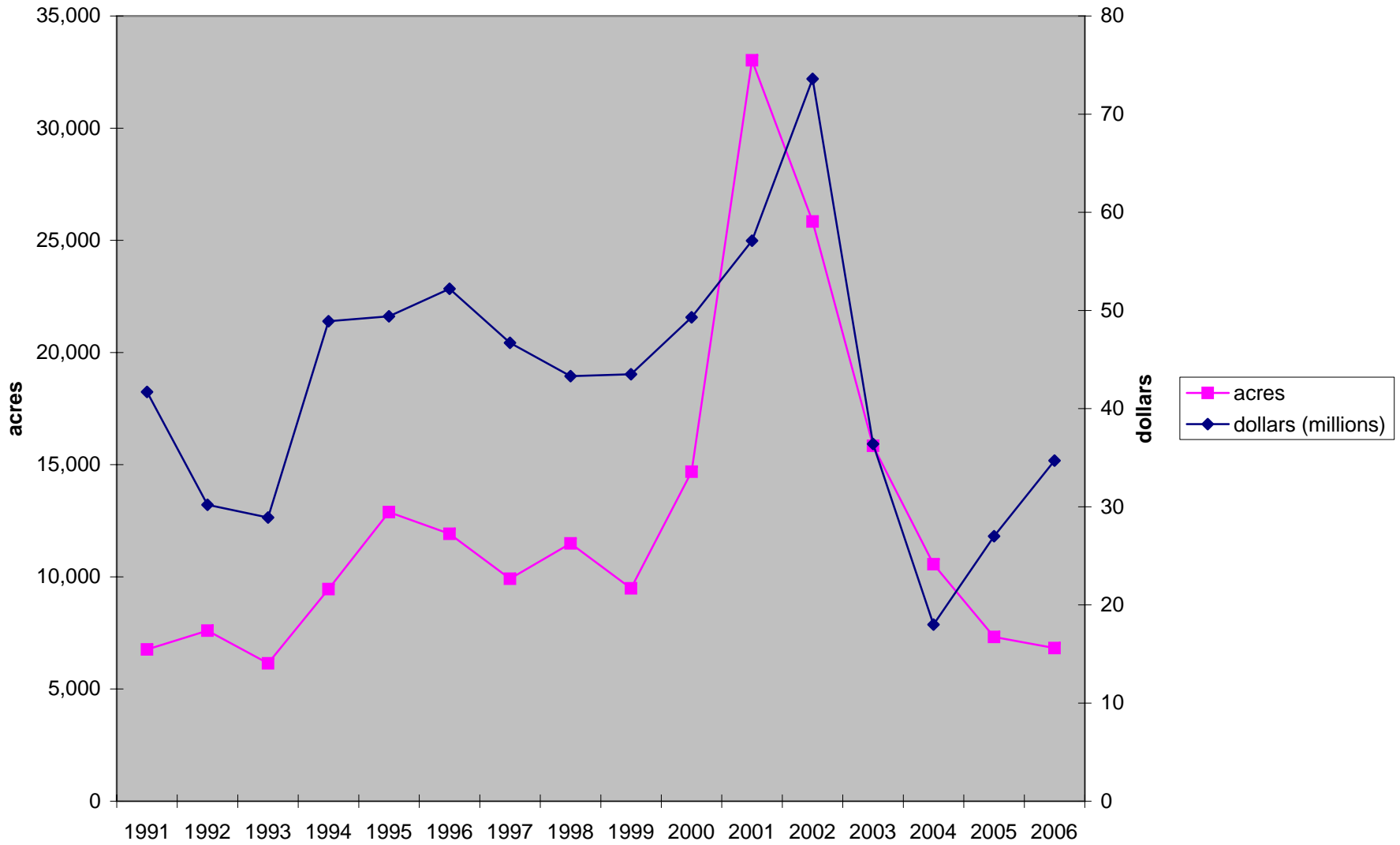


Acres of Land Protected





### Number of Acres Protected and State Dollars Spent by Fiscal Year



	1991	1992	1993	1994	1995	1996	1997	1998
acres	6,766	7,603	6,142	9,455	12,888	11,918	9,914	11,488
dollars	41.7	30.2	28.9	49	49.4	52.2	46.7	43.3

1999	2000	2001	2002	2003	2004	2005	2006
9,486	14,688	33,027	25,838	15,841	10,561	7,320	6,823
43.5	49.3	57.1	73.6	36.4	18	27	34.7