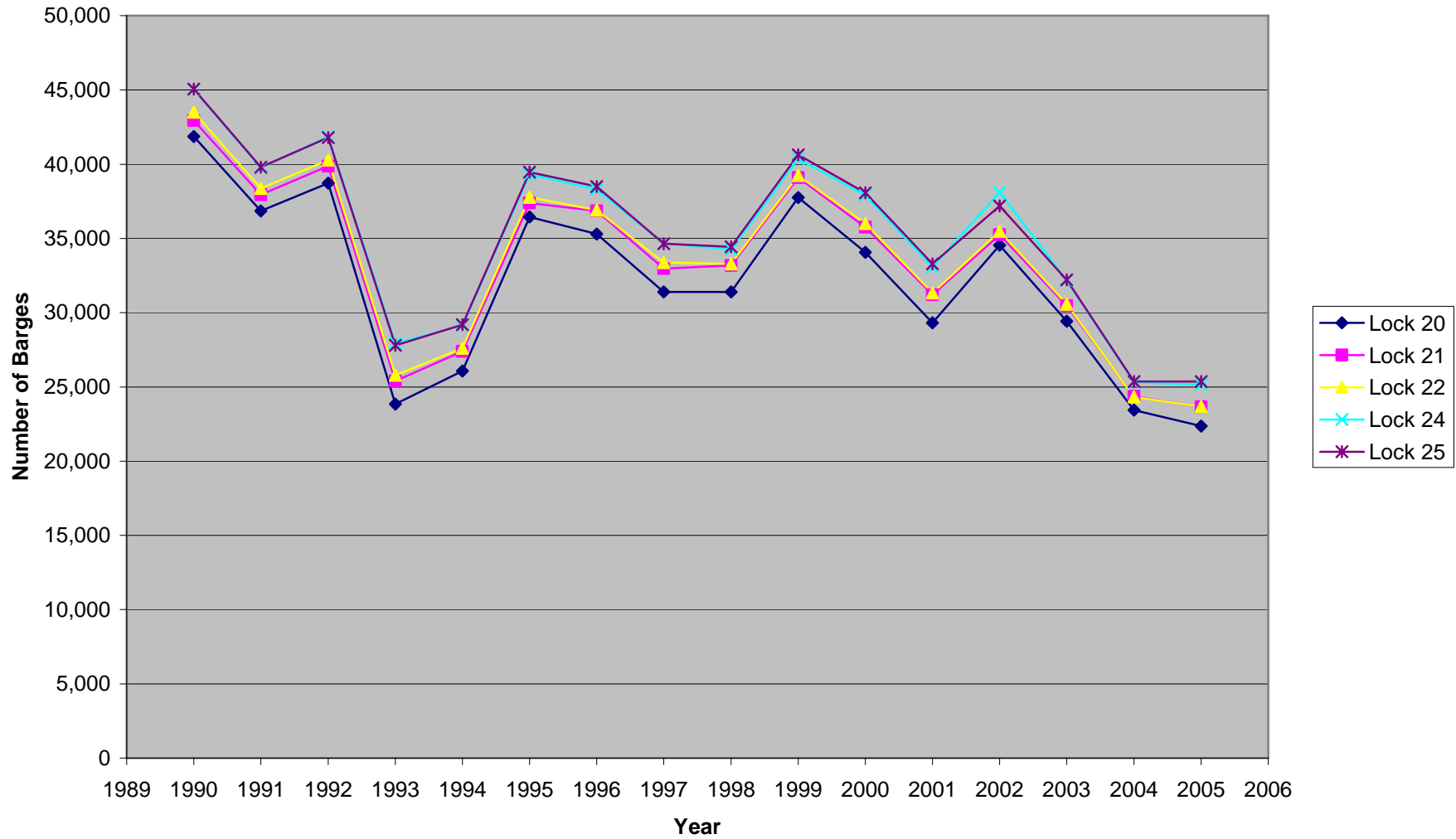
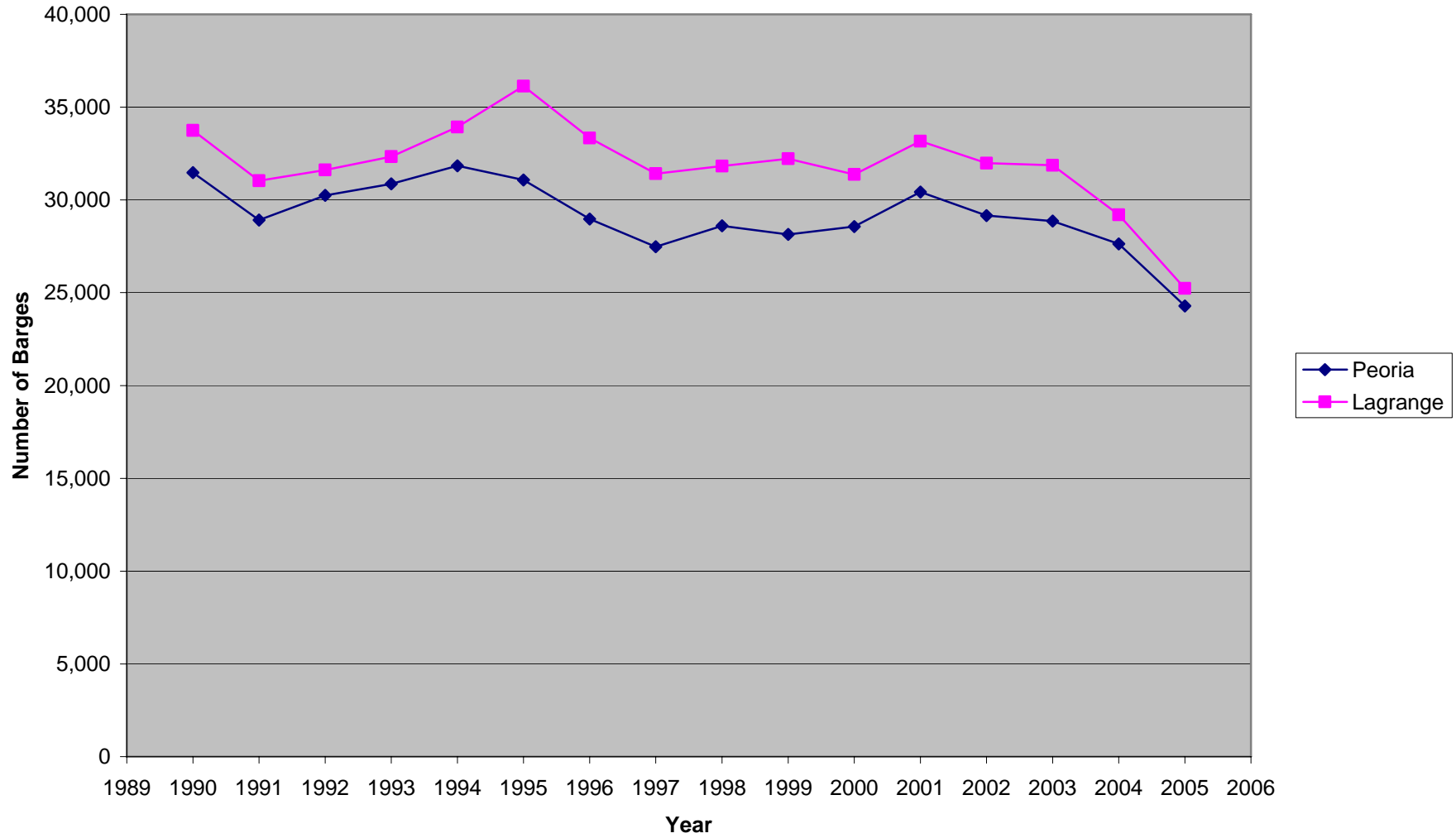


**Barges Processed at UMR Locks 20 through 25  
1990 through 2005**



### Barges Processed at IWW Peoria and Lagrange Locks 1990 through 2005



**Number of Barges Processed**

Lock	2005	2004	2003	2002	2001	2000	1999	1998	1997	1996
<b>Mississippi River</b>										
Lock 20	22,361	23,445	29,415	34,537	29,307	34,066	37,745	31,403	31,398	35,293
Lock 21	23,643	24,359	30,460	35,252	31,197	35,760	39,095	33,173	32,975	36,848
Lock 22	23,671	24,315	30,568	35,472	31,329	36,000	39,237	33,289	33,367	36,905
Lock 24	25,158	25,304	32,158	38,101	33,068	37,909	40,372	34,258	34,665	38,304
Lock 25	25,363	25,363	32,201	37,183	33,283	38,064	40,629	34,436	34,654	38,494
<b>Illinois Waterway</b>										
Peoria	24,279	27,638	28,866	29,152	30,428	28,559	28,146	28,605	27,470	28,972
Lagrange	25,230	29,196	31,862	31,982	33,168	31,367	32,224	31,823	31,412	33,339

Source: US Army Corps of Engineers Lock Performance Monitoring System

Continued...

	1995	1994	1993	1992	1991	1990	Increase	Percentage	Average
							1990 to	Change 1990 to	Annual
							2005	2005	Growth Rate
	36,454	26,076	23,838	38,728	36,857	41,858	-19,497	-46.58%	-3.79%
	37,389	27,393	25,390	39,862	37,945	42,941	-19,298	-44.94%	-3.97%
	37,773	27,598	25,780	40,269	38,375	43,513	-19,842	-45.60%	-4.07%
	39,326	29,137	27,933	41,863	39,748	45,031	-19,873	-44.13%	-4.03%
	39,468	29,192	27,794	41,795	39,797	45,057	-19,694	-43.71%	-4.02%
								-44.99%	
	31,076	31,845	30,868	30,242	28,922	31,472	-7,193	-22.86%	-0.92%
	36,126	33,922	32,329	31,613	31,034	33,739	-8,509	-25.22%	-1.03%
								-24.04%	