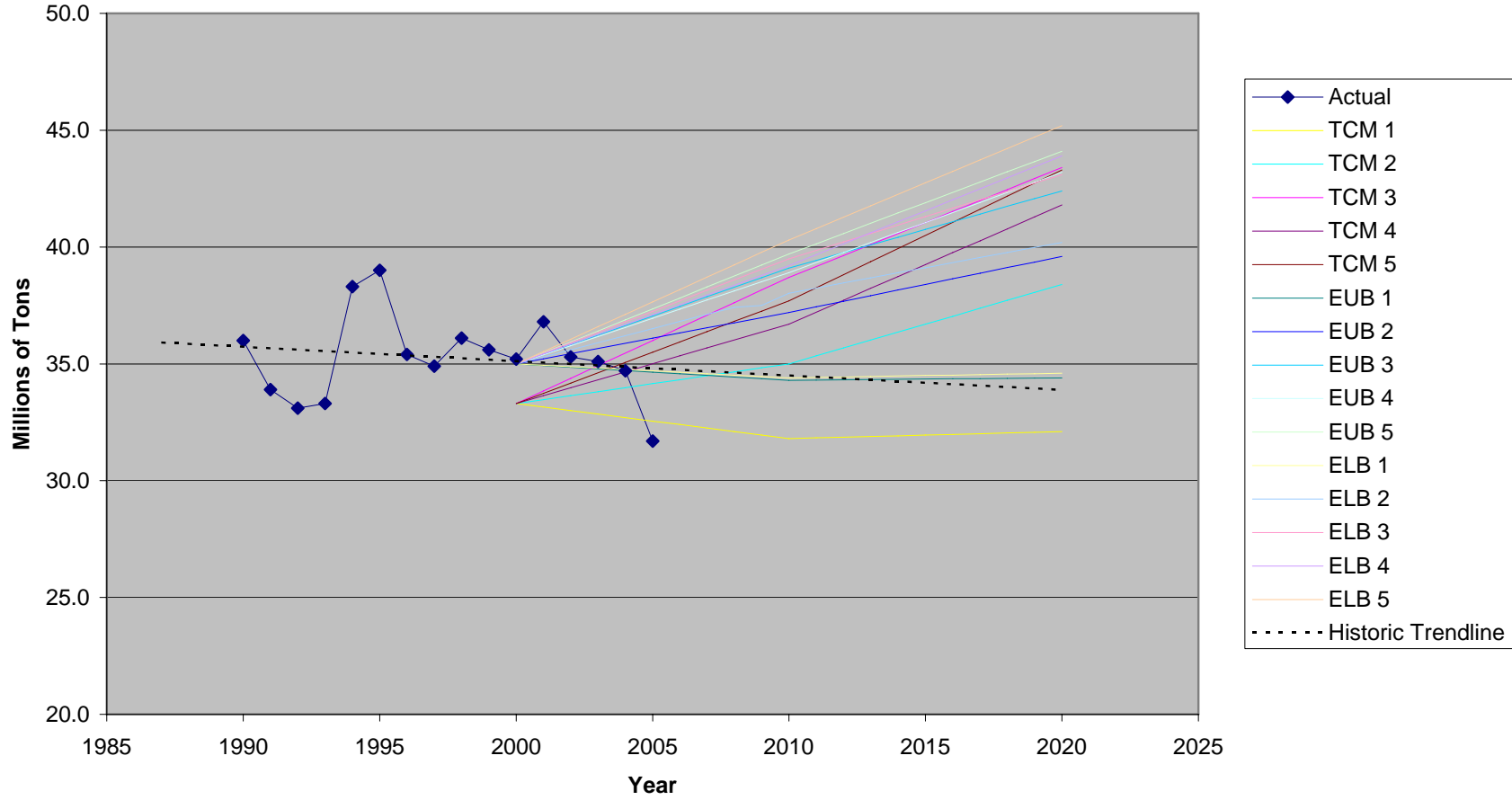




**Lagrange Lock - Illinois Waterway  
The 15 Without Project Traffic Forecasts  
Compared with Actual and Trend Traffic  
1990 to 2020**



Lagrange Lock  
 millions of tons

Year	Actual	TCM 1	TCM 2	TCM 3	TCM 4	TCM 5	EUB 1	EUB 2	EUB 3	EUB 4	EUB 5	ELB 1	ELB 2	ELB 3	ELB 4	ELB 5
1987																
1988																
1989																
1990	36.0															
1991	33.9															
1992	33.1															
1993	33.3															
1994	38.3															
1995	39.0															
1996	35.4															
1997	34.9															
1998	36.1															
1999	35.6															
2000	35.2	33.3	33.3	33.3	33.3	33.3	35.0	35.0	35.0	35.0	35.0	35.0	35.0	35.0	35.0	35.0
2001	36.8	33.2	33.5	33.8	33.6	33.7	34.9	35.2	35.4	35.4	35.5	34.9	35.3	35.5	35.4	35.5
2002	35.3	33.0	33.6	34.4	34.0	34.2	34.9	35.4	35.8	35.8	35.9	34.9	35.6	35.9	35.8	36.1
2003	35.1	32.9	33.8	34.9	34.3	34.6	34.8	35.7	36.2	36.2	36.4	34.8	35.9	36.4	36.3	36.6
2004	34.7	32.7	34.0	35.5	34.7	35.1	34.7	35.9	36.6	36.6	36.9	34.8	36.2	36.8	36.7	37.1
2005	31.7	32.6	34.2	36.0	35.0	35.5	34.7	36.1	37.1	37.0	37.4	34.7	36.5	37.3	37.1	37.7
2006		32.4	34.3	36.5	35.3	35.9	34.6	36.3	37.5	37.3	37.8	34.6	36.8	37.7	37.5	38.2
2007		32.3	34.5	37.1	35.7	36.4	34.5	36.5	37.9	37.7	38.3	34.6	37.1	38.2	37.9	38.7
2008		32.1	34.7	37.6	36.0	36.8	34.4	36.8	38.3	38.1	38.8	34.5	37.4	38.6	38.4	39.2
2009		32.0	34.8	38.2	36.4	37.3	34.4	37.0	38.7	38.5	39.2	34.5	37.5	39.1	38.8	39.8
2010		31.8	35.0	38.7	36.7	37.7	34.3	37.2	39.1	38.9	39.7	34.4	38.0	39.5	39.2	40.3
2011		31.8	35.3	39.2	37.2	38.3	34.3	37.4	39.4	39.3	40.1	34.4	38.2	39.9	39.7	40.8
2012		31.9	35.7	39.6	37.7	38.8	34.3	37.7	39.8	39.8	40.6	34.4	38.5	40.2	40.1	41.3



2001	34.9	35.0	35.5	35.7	35.7	35.8	35.8	36.1	36.4	36.3	36.4	35.8	36.2	36.5	36.5	36.6
2002	38.5	34.7	35.6	36.1	36.1	36.4	35.5	36.2	36.7	36.7	36.8	35.6	36.4	37.0	36.9	37.1
2003	33.7	34.4	35.8	36.6	36.5	36.9	35.3	36.4	37.1	37.0	37.3	35.4	36.6	37.4	37.4	37.7
2004	27.9	34.1	35.9	37.0	36.9	37.5	35.0	36.5	37.4	37.4	37.7	35.2	36.8	37.9	37.8	38.2
2005	29.0	33.8	36.1	37.4	37.3	38.0	34.8	36.6	37.8	37.7	38.1	35.0	37.0	38.4	38.3	38.8
2006		33.4	36.3	37.8	37.6	38.5	34.6	36.7	38.2	38.0	38.5	34.7	37.2	38.9	38.8	39.4
2007		33.1	36.4	38.2	38.0	39.1	34.3	36.8	38.5	38.4	38.9	34.5	37.4	39.4	39.2	39.9
2008		32.8	36.6	38.7	38.4	39.6	34.1	37.0	38.9	38.7	39.4	34.3	37.6	39.8	39.7	40.5
2009		32.5	36.7	39.1	38.8	40.2	33.8	37.1	39.2	39.1	39.8	34.1	37.8	40.3	40.1	41.0
2010		32.2	36.9	39.5	39.2	40.7	33.6	37.2	39.6	39.4	40.2	33.9	38.0	40.8	40.6	41.6
2011		32.1	37.2	39.8	39.6	41.1	33.5	37.3	39.7	39.6	40.4	33.8	38.2	41.0	40.9	41.9
2012		31.9	37.5	40.2	40.1	41.6	33.3	37.4	39.9	39.8	40.6	33.6	38.4	41.2	41.2	42.2
2013		31.8	37.8	40.5	40.5	42.0	33.2	37.6	40.0	40.0	40.8	33.5	38.6	41.5	41.5	42.4
2014		31.6	38.1	40.8	41.0	42.5	33.0	37.7	40.1	40.2	41.0	33.3	38.8	41.7	41.8	42.7
2015		31.5	38.5	41.2	41.4	42.9	32.9	37.8	40.3	40.4	41.2	33.2	39.0	41.9	42.1	43.0
2016		31.3	38.8	41.5	41.8	43.3	32.8	37.9	40.4	40.6	41.4	33.0	39.2	42.1	42.4	43.3
2017		31.2	39.1	41.8	42.3	43.8	32.6	38.0	40.5	40.8	41.6	32.9	39.4	42.3	42.7	43.6
2018		31.0	39.4	42.1	42.7	44.2	32.5	38.2	40.6	41.0	41.8	32.7	39.6	42.6	43.0	43.8
2019		30.9	39.7	42.5	43.2	44.7	32.3	38.3	40.8	41.2	42.0	32.6	39.8	42.8	43.3	44.1
2020		30.7	40.0	42.8	43.6	45.1	32.2	38.4	40.9	41.4	42.2	32.4	40.0	43.0	43.6	44.4

Sources: Actual Tonnages compiled from US Army Corps of Engineers Lock Performance Monitoring System Annual Data 1990 - 2003.

Forecasts compiled from Draft Final Report Restructured UMR-IWW System Navigation Feasibility Study September 2004