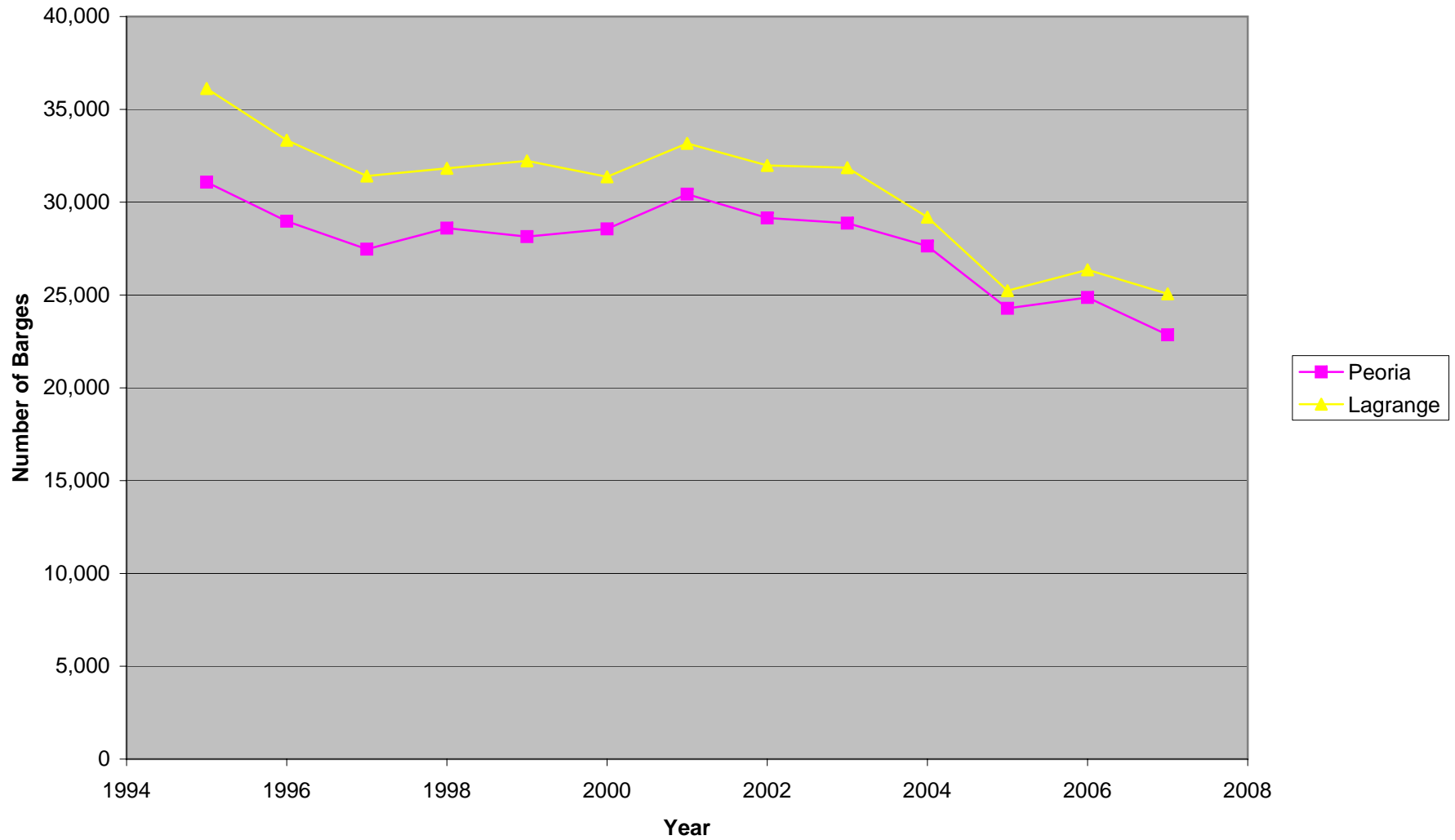
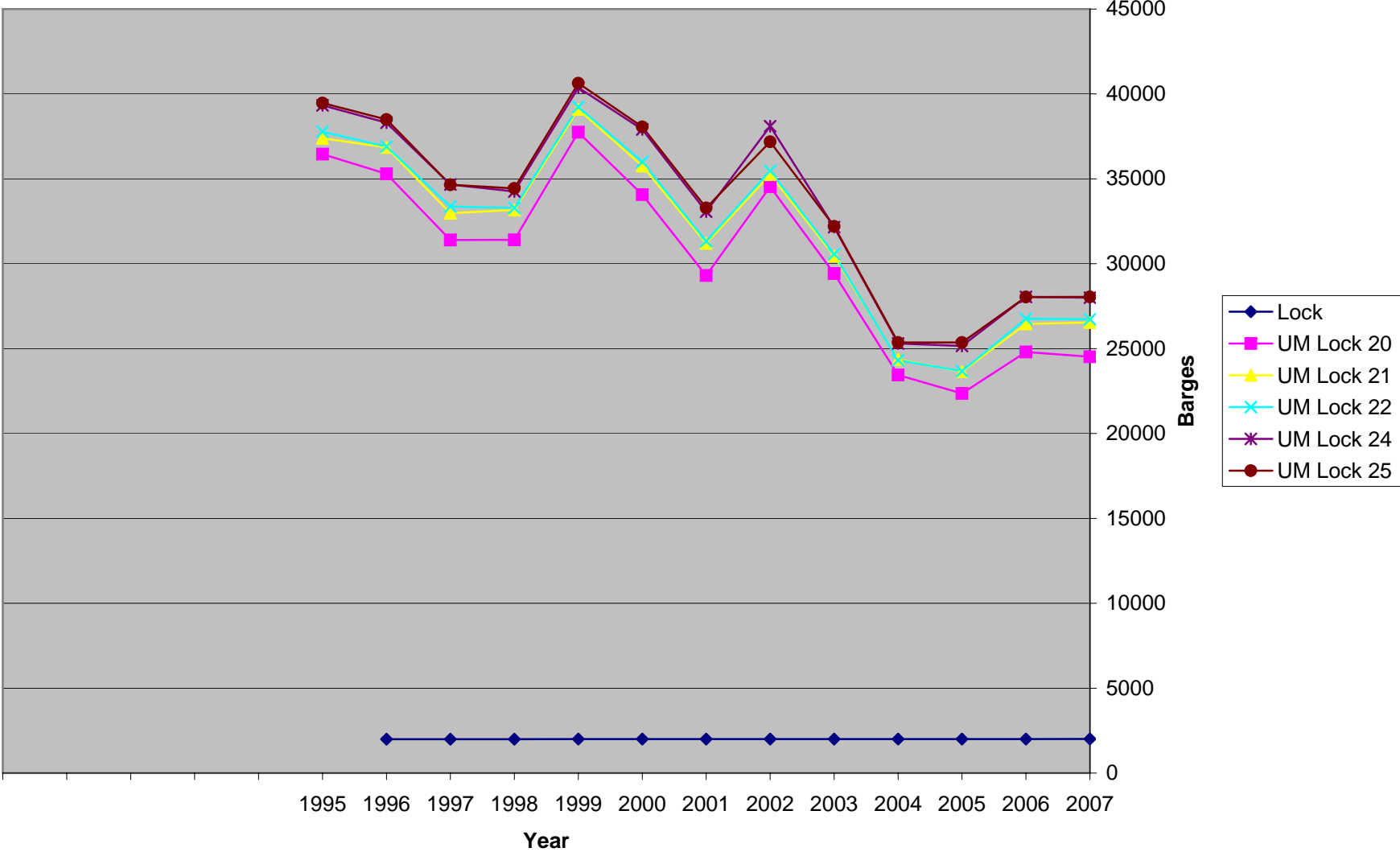


**Barges Processed at Illinois Waterway Peoria and Lagrange Locks
1990 through 2005**



Number of Barges Processed



Number of Barges Processed

Lock	2007	2006	2005	2004	2003	2002	2001	2000	1999	1998	1997	1996	1995
Mississippi River													
UM Lock 20	24,520	24,802	22,361	23,445	29,415	34,537	29,307	34,066	37,745	31,403	31,398	35,293	36,454
UM Lock 21	26,537	26,457	23,643	24,359	30,460	35,252	31,197	35,760	39,095	33,173	32,975	36,848	37,389
UM Lock 22	26,727	26,758	23,671	24,315	30,568	35,472	31,329	36,000	39,237	33,289	33,367	36,905	37,773
UM Lock 24	27,999	28,044	25,158	25,304	32,158	38,101	33,068	37,909	40,372	34,258	34,665	38,304	39,326
UM Lock 25	28,048	28,037	25,363	25,363	32,201	37,183	33,283	38,064	40,629	34,436	34,654	38,494	39,468
Illinois Waterway													
Peoria	22,855	24,867	24,279	27,638	28,866	29,152	30,428	28,559	28,146	28,605	27,470	28,972	31,076
Lagrange	25,063	26,360	25,230	29,196	31,862	31,982	33,168	31,367	32,224	31,823	31,412	33,339	36,126
Total	181,749	185,325	169,705	179,620	215,530	241,679	221,780	241,725	257,448	226,987	225,941	248,155	257,612

Source: US Army Corps of Engineers Lock Performance Monitoring System

Lock	1994	1993	1992	1991	1990	Increase nt Change ge Annual		
						1990 to 2007	1990 to 2007	1990 to 2007
Mississippi River								
UM Lock 20	26,076	23,838	38,728	36,857	41,858	-17,338	-41.42%	-3.03%
UM Lock 21	27,393	25,390	39,862	37,945	42,941	-16,404	-38.20%	-2.81%
UM Lock 22	27,598	25,780	40,269	38,375	43,513	-16,786	-38.58%	-2.82%
UM Lock 24	29,137	27,933	41,863	39,748	45,031	-17,032	-37.82%	-2.75%
UM Lock 25	29,192	27,794	41,795	39,797	45,057	-17,009	-37.75%	-2.75%
Illinois Waterway								
Peoria	31,845	30,868	30,242	28,922	31,472	-8,617	-27.38%	-1.38%
Lagrange	33,922	32,329	31,613	31,034	33,739	-8,676	-25.72%	-1.44%
Total	205,163	193,932	264,372	252,678	283,611	#####	-35.92%	-2.47%