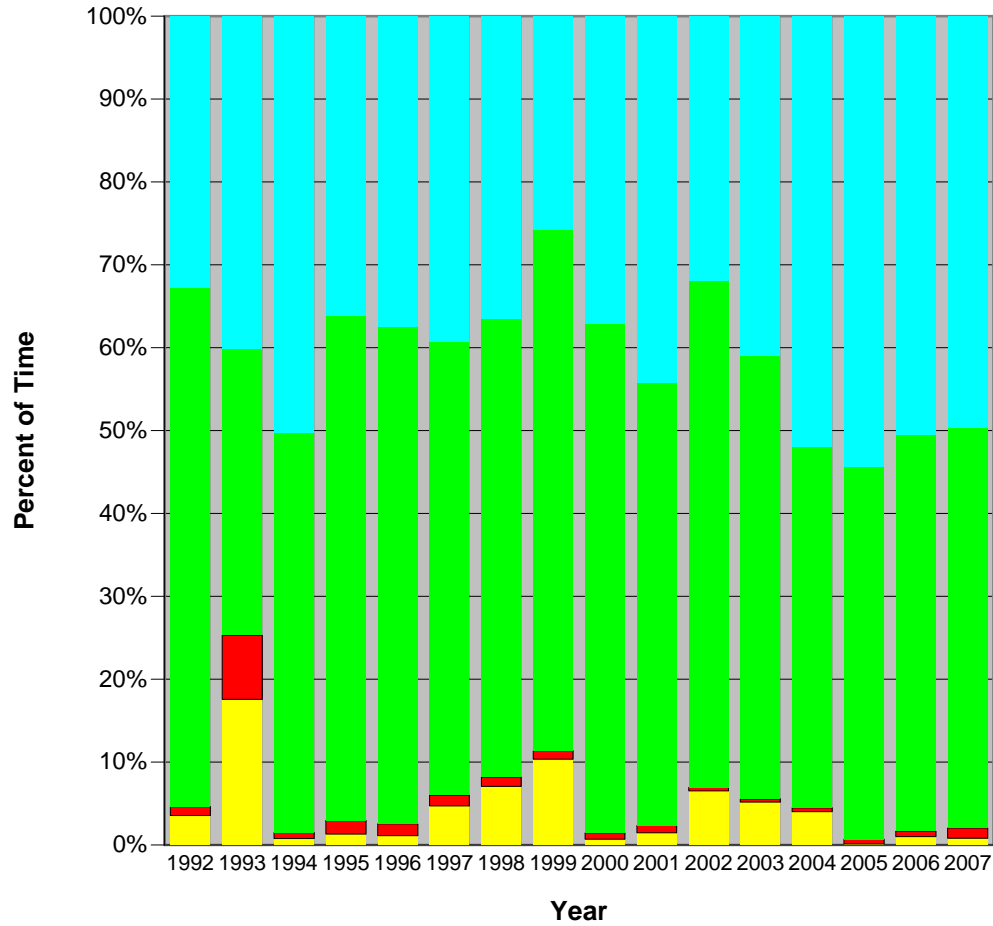


**Upper Mississippi River Locks 20-25
U.S. Army Corps of Engineers OMNI Data
Activity Distribution of Lock Time**



for Use
 Lock Use Impaired
 in Use
 are Idle

Locks are Available

	<u>Lock 20</u>	<u>Lock 21</u>	<u>Lock 22</u>	<u>Lock 24</u>	<u>Lock 25</u>	<u>Total</u>	<u>Less Stall</u>	<u>Less Idle</u>
2007	8,613.52	8,760.00	8,751.80	8,633.47	8,677.67	43,436.46	42,894.32	21,072.08
2006	8,595.37	8,682.42	8,681.85	8,738.07	8,651.67	43,349.38	43,068.78	20,953.89
2005	8,760.00	8,760.00	8,748.10	8,753.25	8,720.35	43,741.70	43,491.90	19,661.41
2004	8,779.00	8,784.00	8,766.25	7,046.22	8,773.49	42,148.96	41,944.38	19,121.84
2003	8,760.00	8,760.00	8,760.00	6,556.03	8,681.51	41,517.54	41,357.15	23,398.83
2002	8,760.00	8,760.00	8,760.00	6,869.52	7,791.23	40,940.75	40,755.26	26,761.89
2001	8,760.00	8,760.00	8,760.00	8,505.17	8,357.49	43,142.66	42,757.66	23,369.18
2000	8,784.00	8,784.00	8,784.00	8,552.98	8,701.14	43,606.12	43,273.00	26,958.75
1999	7,337.05	8,595.02	8,760.00	7,295.88	7,280.13	39,268.08	38,807.03	27,495.54
1998	8,359.00	8,688.08	8,676.88	8,093.17	6,883.48	40,700.61	40,209.71	24,188.99
1997	8,211.36	8,682.26	7,993.67	8,439.80	8,358.02	41,685.11	41,121.92	23,898.88
1996	8,696.81	8,623.95	8,711.45	8,717.89	8,678.05	43,428.15	42,795.53	26,319.00
1995	8,758.62	8,736.82	8,683.08	8,653.82	8,388.10	43,220.44	42,496.81	26,635.28
1994	8,776.10	8,725.49	8,744.64	8,600.99	8,637.37	43,484.59	43,164.31	21,132.15
1993	6,740.07	7,631.82	7,422.22	6,967.43	7,366.12	36,127.66	32,739.09	15,102.77
1992	8,783.18	8,780.57	8,733.81	8,732.18	7,320.72	42,350.46	41,873.52	27,461.87

Locks are in Use**Locks Unavailable for Use**

	<u>Lock 20</u>	<u>Lock 21</u>	<u>Lock 22</u>	<u>Lock 24</u>	<u>Lock 25</u>	<u>Total</u>	
2007	146.48	0.00	8.20	126.53	82.33	363.54	43,800.00
2006	164.63	77.58	78.15	21.93	108.33	450.62	43,800.00
2005	0.00	0.00	11.90	6.75	39.65	58.30	43,800.00
2004	5.00	0.00	17.75	1,737.78	10.51	1,771.04	43,920.00
2003	0.00	0.00	0.00	2,203.97	78.49	2,282.46	43,800.00
2002	0.00	0.00	0.00	1,890.48	968.77	2,859.25	43,800.00
2001	0.00	0.00	0.00	254.83	402.51	657.34	43,800.00
2000	0.00	0.00	0.00	231.02	82.86	313.88	43,920.00
1999	1,422.95	164.98	0.00	1,464.12	1,479.87	4,531.92	43,800.00
1998	401.00	71.92	83.12	666.83	1,876.52	3,099.39	43,800.00
1997	498.64	77.74	766.33	320.20	401.98	2,064.89	43,750.00
1996	87.19	160.05	72.55	66.11	105.95	491.85	43,920.00
1995	1.38	23.18	76.92	106.18	371.90	579.56	43,800.00
1994	7.90	34.51	15.36	159.01	122.63	339.41	43,824.00
1993	2,043.93	1,128.18	1,337.78	1,792.57	1,393.88	7,696.34	43,824.00
1992	0.82	3.43	50.19	51.82	1,463.28	1,569.54	43,920.00

Locks are Idle

	<u>Lock 20</u>	<u>Lock 21</u>	<u>Lock 22</u>	<u>Lock 24</u>	<u>Lock 25</u>	<u>Total</u>	
2007	4,666.27	4,557.60	4,225.48	4,249.07	4,123.82	21,822.24	50.24%
2006	4,630.93	4,478.08	4,279.33	4,432.43	4,294.12	22,114.89	51.02%
2005	4,993.13	4,860.59	4,620.39	4,790.38	4,566.00	23,830.49	54.48%
2004	5,179.98	4,945.68	4,650.61	3,209.84	4,836.43	22,822.54	54.15%
2003	4,433.39	4,258.94	3,852.33	1,619.42	3,794.24	17,958.32	43.25%
2002	3,780.40	3,580.79	3,145.25	1,168.86	2,318.07	13,993.37	34.18%
2001	4,524.82	4,221.18	3,683.08	3,624.38	3,335.02	19,388.48	44.94%
2000	3,853.01	3,595.10	2,942.74	2,972.07	2,951.33	16,314.25	37.41%
1999	2,112.36	3,181.21	2,848.84	1,598.25	1,570.83	11,311.49	28.81%
1998	3,878.22	3,910.41	3,397.62	2,975.68	1,858.79	16,020.72	39.36%
1997	3,892.76	3,949.71	2,743.48	3,358.63	3,278.46	17,223.04	41.32%
1996	3,627.49	3,500.99	3,042.95	3,109.21	3,195.89	16,476.53	37.94%
1995	3,660.32	3,571.08	2,762.65	2,983.09	2,884.39	15,861.53	36.70%
1994	4,767.19	4,724.57	4,061.98	4,179.73	4,298.69	22,032.16	50.67%
1993	3,353.36	4,144.11	3,478.95	3,062.94	3,596.96	17,636.32	48.82%
1992	3,526.99	3,481.15	2,725.98	2,959.88	1,717.65	14,411.65	34.03%

**Lock Use
Impaired**

	<u>Lock 20</u>	<u>Lock 21</u>	<u>Lock 22</u>	<u>Lock 24</u>	<u>Lock 25</u>	<u>Total</u>
2007	125.93	36.25	174.82	94.72	110.42	542.14
2006	39.53	65.18	46.42	79.15	50.32	280.60
2005	71.53	41.32	56.00	32.45	48.50	249.80
2004	40.58	30.14	71.04	38.64	24.18	204.58
2003	15.74	16.73	41.05	31.49	55.38	160.39
2002	24.51	14.05	72.97	42.31	31.65	185.49
2001	52.37	66.77	162.11	51.85	51.90	385.00
2000	71.98	35.86	114.43	40.30	70.55	333.12
1999	98.75	37.22	106.88	91.76	126.44	461.05
1998	147.70	36.17	141.31	75.01	90.71	490.90
1997	111.81	75.73	123.98	116.96	134.71	563.19
1996	111.81	78.52	188.94	122.48	130.87	632.62
1995	109.17	107.91	305.37	76.53	124.65	723.63
1994	51.39	61.24	123.26	54.88	29.51	320.28
1993	96.03	55.06	3055.6	86.00	95.88	3,388.57
1992	71.60	39.31	128.64	68.21	169.18	476.94

Source: U. S. Army Corps of Engineers OMNI Database (data not available prior to 1992)